


**Product data sheet**
**3RN1010-2CW00**

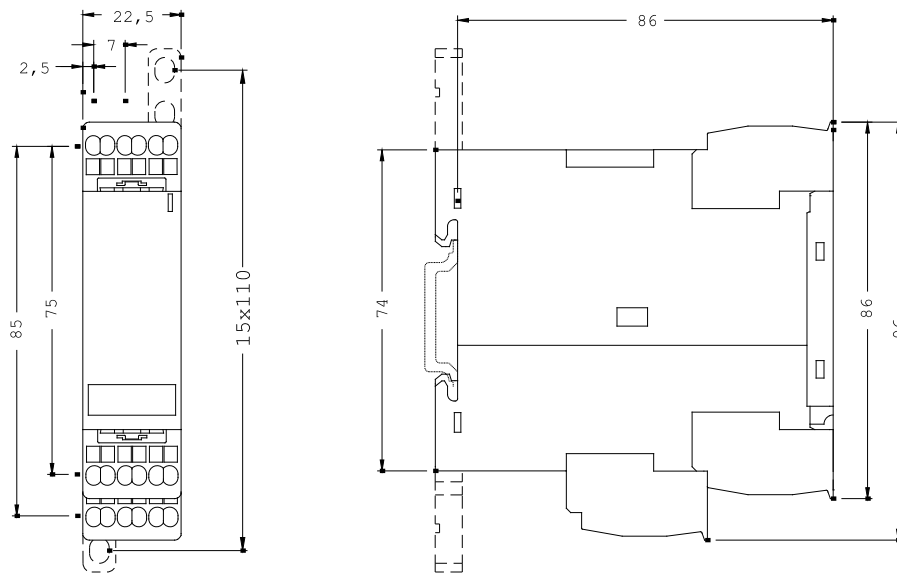
THERMISTOR MOTOR PROTECTION STANDARD  
EVALUATION UNIT AUTO,  
1NO+1NC,  
UC 24...240V CAGE CLAMP CONNECTION

**General technical details:**

Type of voltage	AC/DC
Supply voltage frequency	
<ul style="list-style-type: none"> <li>• 1 / for auxiliary and control current circuit           <ul style="list-style-type: none"> <li>• rated value</li> </ul> </li> <li>• 2 / for auxiliary and control current circuit           <ul style="list-style-type: none"> <li>• rated value</li> </ul> </li> </ul>	50 Hz  60 Hz
Control supply voltage	
<ul style="list-style-type: none"> <li>• 1           <ul style="list-style-type: none"> <li>• at 50 Hz / for AC               <ul style="list-style-type: none"> <li>• initial rated value</li> <li>• final rated value</li> </ul> </li> <li>• at 60 Hz / for AC               <ul style="list-style-type: none"> <li>• initial rated value</li> <li>• final rated value</li> </ul> </li> <li>• for DC               <ul style="list-style-type: none"> <li>• initial rated value</li> <li>• final rated value</li> </ul> </li> </ul> </li> </ul>	24 V 240 V  24 V 240 V  24 V 240 V
Number of measuring circuits	1
Number of NC contacts / for auxiliary contact	1
Number of NO contacts / for auxiliary contact	1
Number of change-over switches / for auxiliary contact	0
Measurable temperature	
<ul style="list-style-type: none"> <li>• initial value</li> <li>• final value</li> </ul>	60 °C 180 °C
Product function	

- Reclosing interlock No
- Self-reset Yes
- Defect storage No
- Reset external No

<b>Mechanical design:</b>	
Design of the electrical connection / for auxiliary and control current circuit	spring-loaded terminals
Design of the electrical connection / Jumper socket	No
Type of display / LED	Yes
Width	22.5 mm
Height	94 mm
Depth	91 mm



**last change:**

10/31/2006

<b>Technical Assistance:</b>	Telephone:	+49 (0) 911-895-5900 (8°° - 17°° CET)
	Fax:	+49 (0) 911-895-5907
	E-Mail:	technical-assistance@siemens.com
	Internet:	<a href="http://www.siemens.de/lowvoltage/technical-assistance">www.siemens.de/lowvoltage/technical-assistance</a>