


Product data sheet
3RN1062-1CW00

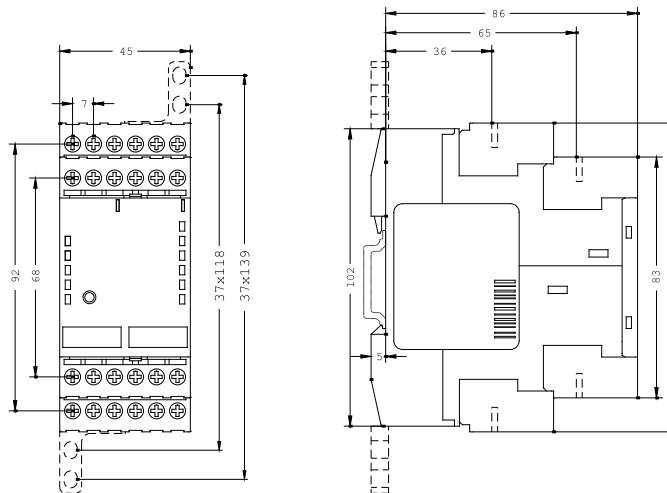
THERMISTOR MOTOR PROTECTION FOR 6
 SENSOR CIRCUITS,
 MULTI-MOTOR PROTECTION, 1NO+1NC,
 UC 24...240V, SCREW CONNECTION

General technical details:

Type of voltage	AC/DC
Supply voltage frequency	
<ul style="list-style-type: none"> • 1 / for auxiliary and control current circuit <ul style="list-style-type: none"> • rated value • 2 / for auxiliary and control current circuit <ul style="list-style-type: none"> • rated value 	50 Hz 60 Hz
Control supply voltage	
<ul style="list-style-type: none"> • 1 <ul style="list-style-type: none"> • at 50 Hz / for AC <ul style="list-style-type: none"> • initial rated value • final rated value • at 60 Hz / for AC <ul style="list-style-type: none"> • initial rated value • final rated value • for DC <ul style="list-style-type: none"> • initial rated value • final rated value 	24 V 240 V 24 V 240 V 24 V 240 V
Number of measuring circuits	6
Number of NC contacts / for auxiliary contact	1
Number of NO contacts / for auxiliary contact	1
Number of change-over switches / for auxiliary contact	0
Measurable temperature	
<ul style="list-style-type: none"> • initial value • final value 	60 °C 180 °C
Product function	

• Reclosing interlock	Yes
• Self-reset	Yes
• Defect storage	Yes
• Reset external	Yes

Mechanical design:	
Design of the electrical connection / for auxiliary and control current circuit	screw-type terminals
Design of the electrical connection / Jumper socket	No
Type of display / LED	Yes
Width	45 mm
Height	106 mm
Depth	91 mm



last change:

10/31/2006

Technical Assistance:	Telephone:	+49 (0) 911-895-5900 (8 ⁰⁰ - 17 ⁰⁰ CET)
	Fax:	+49 (0) 911-895-5907
	E-Mail:	technical-assistance@siemens.com
	Internet:	www.siemens.de/lowvoltage/technical-assistance