

Similar to image

CIRCUIT-BREAKER VL 630N STANDARD BREAKING CAPACITY ICU=55KA / 415 V AC 3 POLE, LINE PROTECTION OVERCURRENT RELEASE TM, LI IN=400A, RATED CURRENT IR=315-400A, OVERLOAD II=2000-4000A, SHORT CIRCUIT WITHOUT AUXILIARY RELEASE WITHOUT AUXILIARY/ALARM SWITCH

General technical data:

| | | |
|--|-----|-------------------|
| Number of poles | | 3 |
| Design of the overcurrent release | | TM |
| Acceptability for application | | system protection |
| Electrical operating cycles as operating time / typical | | 5,000 |
| Mechanical operating cycles as operating time / typical | | 10,000 |
| Active power loss / maximum | W | 230 |
| Product component | | |
| • auxiliary switch | | No |
| • Voltage trigger | | No |
| • undervoltage release mechanism | | No |
| • undervoltage release with leading contact | | No |
| Product function | | |
| • of the thermal overload release | | adjustable |
| • ground-fault protection | | No |
| • for zero conductors / short-circuit and overload protection | | No |
| • overload protection | | Yes |
| Operating cycles / maximum | 1/s | 60 |
| Protection class IP | | IP20 |

| | | |
|---|----|-------------|
| Protective function of the overcurrent release | | LI |
| Impulse voltage resistance / rated value | kV | 8 |
| Ambient temperature | | |
| • during operating | °C | 0 ... 70 |
| • during storage | °C | -40 ... +80 |

Main circuit:

| | | |
|---|----|-----|
| Insulation voltage / for AC / rated value | V | 800 |
| Operating frequency | | |
| • 1 / rated value | Hz | 50 |
| • 2 / rated value | Hz | 60 |
| Reference code | | |
| • according to DIN 40719 extended according to IEC 204-2 / according to IEC 750 | | Q |
| • according to DIN EN 61346-2 | | Q |
| Operating voltage / for main circuit | | |
| • at 50 Hz / with AC | | |
| • maximum | V | 690 |
| • at 60 Hz / with AC | | |
| • maximum | V | 690 |
| Operating voltage / for main current circuit / for DC | | |
| • maximum | V | 500 |
| Operating current | | |
| • at 40 °C / rated value | A | 400 |
| • at 50 °C / rated value | A | 400 |
| • at 60 °C / rated value | A | 372 |
| • at 70 °C / rated value | A | 344 |
| Continuous current / rated value | A | 400 |
| Derating temperature / for the rated value of the continuous current | °C | 50 |

Auxiliary circuit:

| | | |
|---|--|---|
| Number of NC contacts / for auxiliary contacts | | 0 |
| Number of NO contacts / for auxiliary contacts | | 0 |

Short-circuit:

| | | |
|--|----|-----------------|
| Adjustable response current | | |
| • of the current-dependent overload release | A | 320 ... 400 |
| • of the non-delayed short-circuit release | A | 2,000 ... 4,000 |
| Breaking capacity limit short-circuit current (I_{cu}) / at 415 V / rated value | kA | 55 |

Installation/mounting/dimensions:

| | | |
|---------------|----|----------------|
| Mounting type | | fixed mounting |
| Height | mm | 279.5 |
| Width | mm | 190 |
| Depth | mm | 138.5 |

Connections:

| | | |
|--|--|--|
| Arrangement of electrical connectors / for main current circuit | | front side |
| Design of the electrical connection / for main current circuit | | screw-type terminals |
| Type of the connectable conductor cross-section <ul style="list-style-type: none">• for auxiliary contacts• solid• finely stranded / with conductor end processing | | 0.75 ... 1.5 mm ² 0,75 ... 1.0 mm ² |

Certificates/approvals:

General Product Approval



CCC

[TSE](#)

Declaration of Conformity



EG-Konf.

Test Certificates

[Special Test Certificate](#)

Shipping Approval



GL



PRS



RINA



RMRS

other

[Confirmation](#)

[other](#)

[Environmental Confirmations](#)

Further information:

Information- and Downloadcenter (Catalogs, Brochures,...)

<http://www.siemens.com/lowvoltage/catalogs>

Industry Mall (Online ordering system)

<https://eb.automation.siemens.com/mall/en/WW/Catalog/Product/3VL5740-1DC36-0AA0>

Service&Support (Manuals, Certificates, Characteristics, FAQs,...)

<http://support.automation.siemens.com/WW/view/en/3VL5740-1DC36-0AA0/all>

Image database (product images, 2D dimension drawings, 3D models, device circuit diagrams, ...)

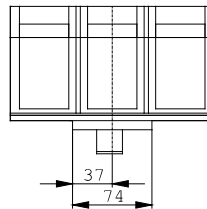
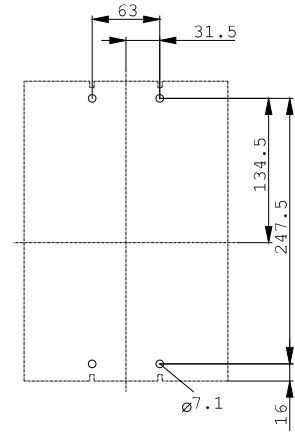
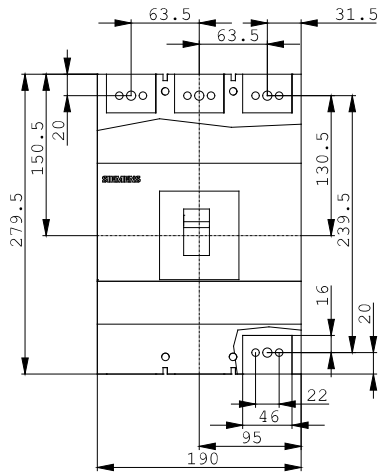
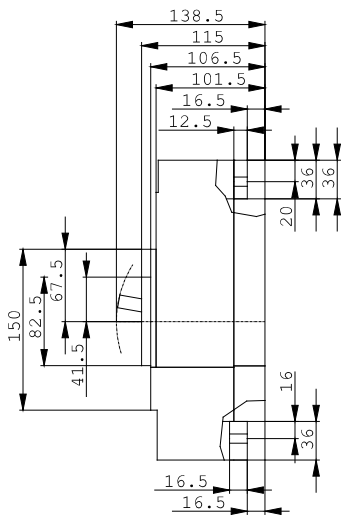
http://www.automation.siemens.com/bilddb/cax_en.aspx?mlfb=3VL5740-1DC36-0AA0

CAX-Online-Generator

<http://www.siemens.com/cax>

Tender specifications

[Datanorm](#) [GAEB81](#) [GAEB83](#) [RTF](#) [TXT](#)



last change:

Jun 16, 2014